



GF

CERSAIE2021 COLLECTION

GAYAFORES
since 1897

ESSENCE

TIMELESS TILES

CERSAIE2021 COLLECTION

stone**essence**

marble**essence**

urban**essence**

cotto**essence**

ARAN p.2

PALISSANDRO p.6

MARMETTA p.10

COTTAGE p.28

CORE p.18

Producido Por | Produced By | Produit Par | Produziert Von | Производится
GAYAFORES
Edición | Edition | Édition | Ausgabe | Издание
2021

CONTACTO | OFICINAS Y ALMACÉN
CONTACT | HEADQUARTER AND WAREHOUSE
CONTACT | BUREAUX ET ENTREPOT
WEISSCHERBIGE WANDFLIESE | BÜROS UND LAGER
НАСТЕННАЯ ПЛИТКА | ОФИСЫ И СКЛАД

CV-20 Km.7 / Apdo. Correos 36
12200 Onda (Castellón) Spain
+34 964 62 62 62
+34 964 62 61 60 (Export)
+34 964 62 63 63 (Administration)
+34 964 62 60 00 (Fax)

www.gayafores.es
info@gayafores.es



Este catálogo ha sido realizado con materiales respetuosos con el medio ambiente | This catalog has been made with environmentally friendly materials

GAYAFORES
since 1897

ARAN

stoneessence



Rect. Aran Almond 59,1x119,1 / 23,3"x46,9"

60x120 cm / 23,6"x47,3"
Rect 59,1x119,1 cm / 23,3"x46,9"
45x90 cm / 17,7"x35,5"
32x62,5 cm / 12,6"x24,6"

PIEDRA | PORCELÁNICO ESMALTADO
STONE | GLAZED PORCELAIN TILES
PIERRE | GRES CERAME EMAILLE
STEIN | GLASIERTES FEINSTEINZEUG
КАМЕНЬ | КЕРАМОГРАНИТ ГЛАЗУРОВАННЫЙ



Rect. Aran Grey 59,1x119,1 / 23,3"x46,9" · Deco Aran Grey 32x62,5 / 12,6"x24,6"

PIEDRA | PORCELÁNICO ESMALTADO
STONE | GLAZED PORCELAIN TILES
PIERRE | GRES CERAME EMAILLÉ
STEIN | GLASIERTES FEINSTEINZEUG
КАМЕНЬ | КЕРАМОГРАНИТ ГЛАЗУРОВАННЫЙ

60x120 cm / 23,6"x47,3"
Rect 59,1x119,1 cm / 23,3"x46,9"
45x90 cm / 17,7"x35,5"
32x62,5 cm / 12,6"x24,6"



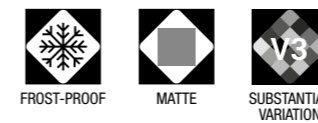
Rect. Aran Grey 59,1x119,1 / 23,3"x46,9"



Deco Aran Grey 32x62,5 / 12,6"x24,6" · Rect.Aran Grey 59,1x119,1 / 23,3"x46,9"



Rect. Aran Almond 59,1x119,1 / 23,3"x46,9"
Deco Aran Almond 32x62,5 / 12,6"x24,6"



CARACTERÍSTICAS TÉCNICAS
TECHNICAL DATA
CARACTÉRISTIQUES TECHNIQUES
TECHNIISCHE CHARAKTERISTIKEN
ТЕХНИЧЕСКАЯ ХАРАКТЕРИСТИКА

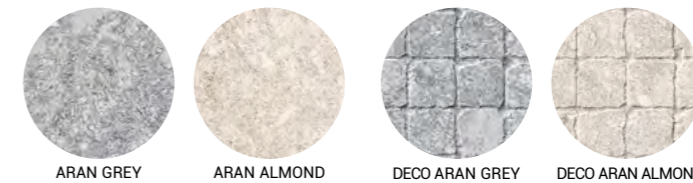
COLOR	FLEXIÓN ISO-10545-4	DUREZA MOHS/EN-101	ABRASIÓN-PEI ISO-10545-7	CUARTEO ISO-10545-11	RESISTENCIA AL ATAQUE QUÍMICO (ISO-10545-13)				R. HELADA ISO-10545-12	DESlizamiento DIN 51130-R	DESlizamiento UNE-ENV 12633	DCOF ANSI A137.1	CLASIFICACIÓN GAYAFORES
					MANCHAS	AGENTES LIMPIEZA	ADITIVOS PISCINAS	ÁCIDOS/BASES					
ARAN GREY ARAN ALMOND	≥ 35	7	IV	CUMPLE	5	A	A	LA/HA	CUMPLE	R-10	C1	0,42 ≤ DCOF < 0,60	D+
DECO ARAN GREY, DECO ARAN ALMOND	≥ 35	7	-	CUMPLE	5	A	A	LA/HA	CUMPLE	-	-	-	W

DESARROLLO GRÁFICO
GRAPHIC DEVELOPMENT
DÉVELOPPEMENT GRAPHIQUE
GRAFISCHE ENTWICKLUNG
ГРАФИЧЕСКОЕ РАЗВИТИЕ

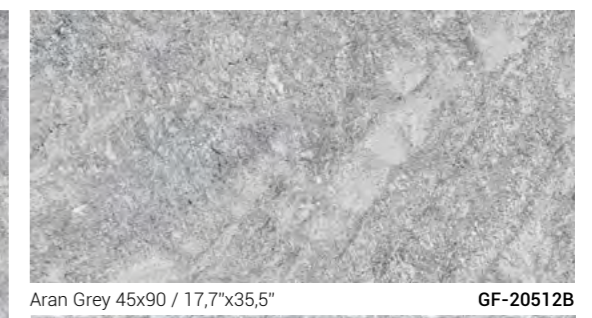
60x120 / 12 patterns	45x90 / 15 patterns	DECO 45x90 / 10 patterns	32x62,5 / 20 patterns	DECO 32x62,5 / 10 patterns
----------------------	---------------------	--------------------------	-----------------------	----------------------------

PACKING LIST

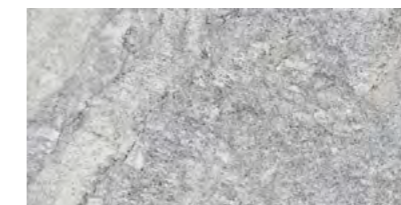
FORMATO	ESPESOR	ARTÍCULO	PZS / CJ	M2 / CJ	CJ / PAL	M2 / PAL	KG / CJ	KG / M2	KG / PAL
60x120	11,4	ARAN	2	1,44	30	43,20	36,72	25,50	1102
59,1x119,1	11,4	RECT. ARAN	2	1,41	27	38,07	36,00	25,50	971
45x90	11	ARAN / DECO ARAN	3	1,22	30	36,60	30,10	24,70	902
32x62,5	9	ARAN / DECO ARAN	5	1,00	48	48,00	19,90	19,90	955
30x30	9	MOSAICO ARAN	6	0,54	36	216 PZS.	9,84	1,64 / PZA	354
8x45	9	ROD. N ARAN	26	-	60	1560 PZS.	15,6	0,6 / PZA	936



Rect. Aran Grey 59,1x119,1 / 23,3"x46,9"
Aran Grey 60x120 / 23,6"x47,3"



Aran Grey 45x90 / 17,7"x35,5" **GF-20512B**



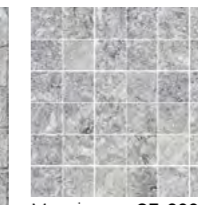
Aran Grey 32x62,5 / 12,6"x24,6" **GF-20355B**



Deco Aran Grey 45x90 / 17,7"x35,5" **GF-20512D**



Deco Aran Grey 32x62,5 / 12,6"x24,6" **GF-20355D**



Mosaico **GF-20045**
Aran Grey 30x30 / 11,8"x11,8"

PALISSANDRO

marbleessence



Rect. Palissandro Natural 59,1x119,1 / 23,3"x46,9"

60x120 cm / 23,6"x47,3"
Rect 59,1x119,1 cm / 23,3"x46,9"
45x90 cm / 17,7"x35,5"
32x62,5 cm / 12,6"x24,6"

MÁRMOL | PORCELÁNICO ESMALTADO
MARBLE | GLAZED PORCELAIN TILES
MARBRE | GRES CERAME EMAILÉ
MARMOR | GLASIERTES FEINSTEINZEUG
МРАМОР | КЕРАМОГРАНИТ ГЛАЗУРОВАННЫЙ



Rect. Palissandro Natural 59,1x119,1 / 23,3"x46,9" · Deco Palissandro Natural 45x90 / 17,7"x35,5"

MÁRMOL | PORCELÁNICO ESMALTADO
MARBLE | GLAZED PORCELAIN TILES
MARBRE | GRES CERAME EMAILLÉ
MARMOR | GLASIERTES FEINSTEINZEUG
МРАМОР | КЕРАМОГРАНИТ ГЛАЗУРОВАННЫЙ

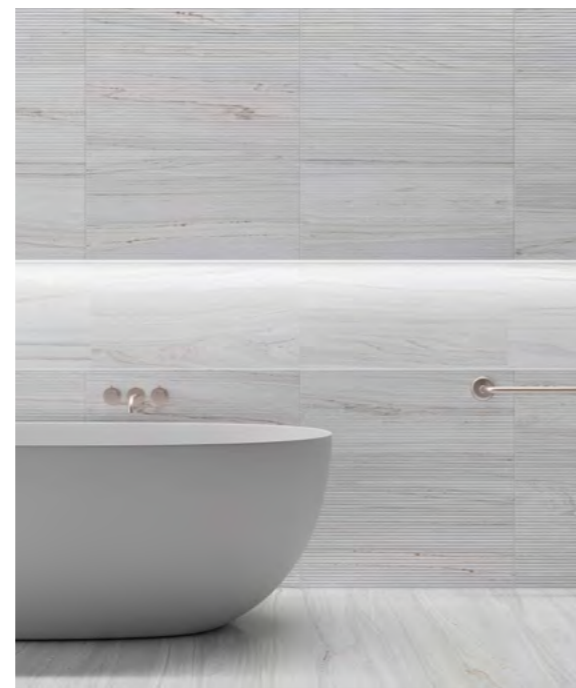
60x120 cm / 23,6"x47,3"
Rect 59,1x119,1 cm / 23,3"x46,9"
45x90 cm / 17,7"x35,5"
32x62,5 cm / 12,6"x24,6"



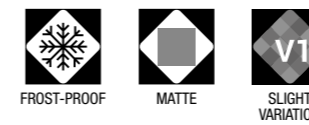
Rect. Palissandro Natural 59,1x119,1 / 23,3"x46,9" - Oregon Natural 20x120 / 7,9"x47,3"



Deco Palissandro Natural 32x62,5 / 12,6"x24,6"
Rect. Palissandro Natural 59,1x119,1 / 23,3"x46,9"



Deco Palissandro Natural 32x62,5 / 12,6"x24,6"
Rect. Palissandro Natural 59,1x119,1 / 23,3"x46,9"



CARACTERÍSTICAS TÉCNICAS
TECHNICAL DATA
CARACTÉRISTIQUES TECHNIQUES
TECHNIISCHE CHARAKTERISTIKEN
ТЕХНИЧЕСКАЯ ХАРАКТЕРИСТИКА

COLOR	FLEXIÓN ISO-10545-4	DUREZA MOHS/EN-101	ABRASIÓN-PEI ISO-10545-7	CUARTEO ISO-10545-11	RESISTENCIA AL ATAQUE QUÍMICO (ISO-10545-13)				R. HELADA ISO-10545-12	DESIZAMIENTO DIN 51130-R	DESIZAMIENTO UNE-ENV 12633	DCOF ANSI A137.1	CLASIFICACIÓN GAYAFORES
					MANCHAS	AGENTES LIMPIEZA	ADITIVOS PISCINAS	ÁCIDOS/BASES					
PALISSANDRO NATURAL	≥ 35	5	IV	CUMPLE	5	A	A	LA/HA	CUMPLE	R-9	C1	0,42 ≤ DCOF < 0,60	B
DECO PALISSANDRO NATURAL	≥ 35	5	-	CUMPLE	5	A	A	LA/HA	CUMPLE	-	-	-	W

DESARROLLO GRÁFICO
GRAPHIC DEVELOPMENT
DÉVELOPPEMENT GRAPHIQUE
GRAFISCHE ENTWICKLUNG
ГРАФИЧЕСКОЕ РАЗВИТИЕ

60x120 / 12 patterns	45x90 / 15 patterns	DECO 45x90 / 10 patterns	32x62,5 / 20 patterns	DECO 32x62,5 / 10 patterns
----------------------	---------------------	--------------------------	-----------------------	----------------------------

PACKING LIST

FORMATO	ESPEJOR	ARTÍCULO	PZS / CJ	M2 / CJ	CJ / PAL	M2 / PAL	KG / CJ	KG / M2	KG / PAL
60x120	11,4	PALISSANDRO	2	1,44	30	43,20	36,72	25,50	1102
59,1x119,1	11,4	RECT. PALISSANDRO	2	1,41	27	38,07	36,00	25,50	971
45x90	11	PALISSANDRO / DECO PALISSANDRO	3	1,22	30	36,60	30,10	24,70	902
32x62,5	9	PALISSANDRO / DECO PALISSANDRO	5	1,00	48	48,00	19,90	19,90	955
30x30	9	MOSAICO PALISSANDRO	6	0,54	36	216 PZS.	9,84	1,64 / PZA	354
8x45	9	ROD. N PALISSANDRO	26	-	60	1560 PZS.	15,6	0,6 / PZA	936



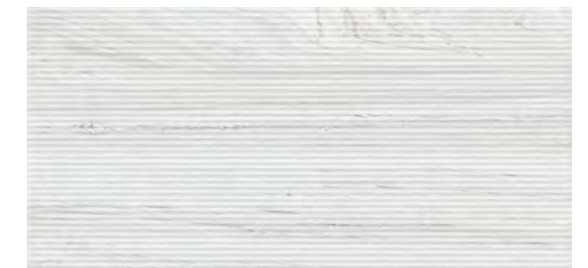
Rect. Palissandro Natural 59,1x119,1 / 23,3"x46,9" **GF-20552B**
Palissandro Natural 60x120 / 23,6"x47,3" **GF-20551B**



Palissandro Natural 45x90 / 17,7"x35,5" **GF-20512B**



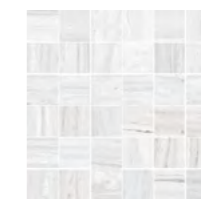
Palissandro Natural 32x62,5 / 12,6"x24,6" **GF-20355B**



Deco Palissandro Natural 45x90 / 17,7"x35,5" **GF-20512D**



Deco Palissandro Natural 32x62,5 / 12,6"x24,6" **GF-20355D**



Mosaico **GF-20045**
Palissandro Natural 30x30 / 11,8"x11,8"

MARMETTA

urbanessence



Rect. Marmetta Grey 59,1x119,1 / 23,3"x46,9" · Deco Marmetta Grey 32x62,5 / 12,6"x24,6"

60x120 cm / 23,6"x47,3"
Rect 59,1x119,1 cm / 23,3"x46,9"
45x90 cm / 17,7"x35,5"
32x62,5 cm / 12,6"x24,6"

PIEDRA | PORCELÁNICO ESMALTADO
STONE | GLAZED PORCELAIN TILES
PIERRE | GRES CERAME EMAILÉ
STEIN | GLASIERTES FEINSTEINZEUG
КАМЕНЬ | КЕРАМОГРАНИТ ГЛАЗУРОВАННЫЙ



Rect. Marmetta Cream 59,1x119,1 / 23,3"x46,9" · Marmetta Cream 32x62,5 / 12,6"x24,6" · Deco Marmetta Cream 32x62,5 / 12,6"x24,6" · Listelo Marmetta Cream 3,2x32 / 1,3"x12,6"

PIEDRA | PORCELÁNICO ESMALTADO
STONE | GLAZED PORCELAIN TILES
PIERRE | GRES CERAME EMAILLÉ
STEIN | GLASIERTES FEINSTEINZEUG
КАМЕНЬ | КЕРАМОГРАНИТ ГЛАЗУРОВАННЫЙ



Rect. Marmetta Grey 59,1x119,1 / 23,3"x46,9" · Deco Marmetta Grey 32x62,5 / 12,6"x24,6"

60x120 cm / 23,6"x47,3"
Rect 59,1x119,1 cm / 23,3"x46,9"
45x90 cm / 17,7"x35,5"
32x62,5 cm / 12,6"x24,6"



Rect. Marmetta Cream 59,1x119,1 / 23,3"x46,9" · Deco Marmetta Cream 32x62,5 / 12,6"x24,6"



Marmetta Grey 32x62,5 / 12,6"x24,6"
Deco Marmetta Grey 32x62,5 / 12,6"x24,6"
Listelo Marmetta Grey 3,2x32 / 1,3"x12,6"



Rect. Marmetta Cream 59,1x119,1 / 23,3"x46,9"
Deco Marmetta Cream 32x62,5 / 12,6"x24,6"

PIEDRA | PORCELÁNICO ESMALTADO
STONE | GLAZED PORCELAIN TILES
PIERRE | GRES CERAME EMAILLÉ
STEIN | GLASIERTES FEINSTEINZEUG
КАМЕНЬ | КЕРАМОГРАНИТ ГЛАЗУРОВАННЫЙ

60x120 cm / 23,6"x47,3"
Rect 59,1x119,1 cm / 23,3"x46,9"
45x90 cm / 17,7"x35,5"
32x62,5 cm / 12,6"x24,6"



Rect. Marmetta Grey 59,1x119,1 / 23,3"x46,9" · Deco Marmetta Grey 32x62,5 / 12,6"x24,6"



Rect. Marmetta Cream 59,1x119,1 / 23,3"x46,9"
Deco Marmetta Cream 32x62,5 / 12,6"x24,6"

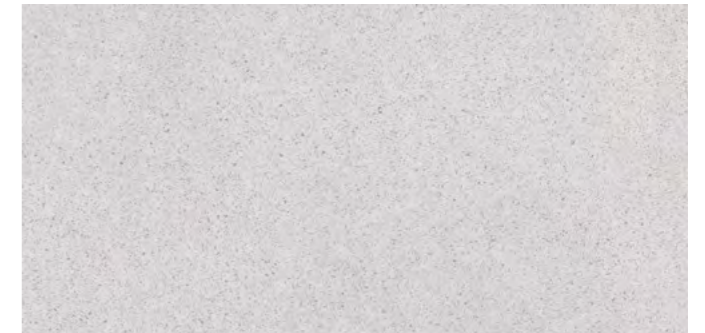


Rect. Marmetta Grey 59,1x119,1 / 23,3"x46,9"



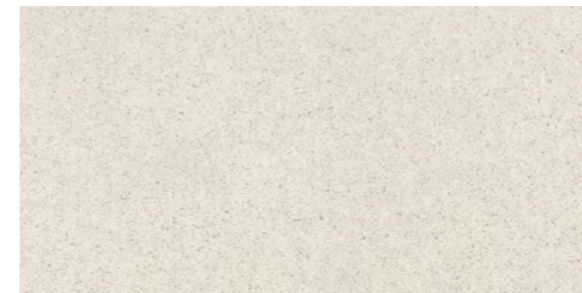
Rect. Marmetta Cream 59,1x119,1 / 23,3"x46,9"
Marmetta Cream 60x120 / 23,6"x47,3"

GF-20552B
GF-20551B



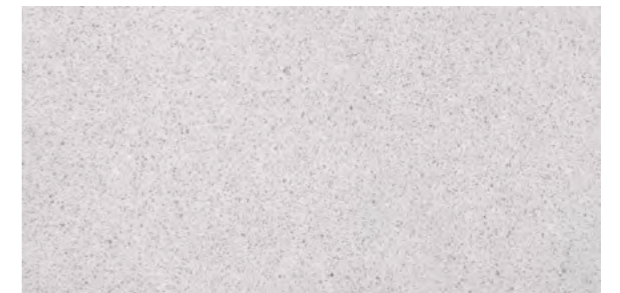
Rect. Marmetta Grey 59,1x119,1 / 23,3"x46,9"
Marmetta Grey 60x120 / 23,6"x47,3"

GF-20552B
GF-20551B



Marmetta Cream 45x90 / 17,7"x35,5"

GF-20512B



Marmetta Grey 45x90 / 17,7"x35,5"

GF-20512B



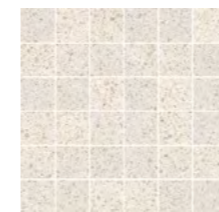
Deco Marmetta Cream 45x90 / 17,7"x35,5"

GF-20512D

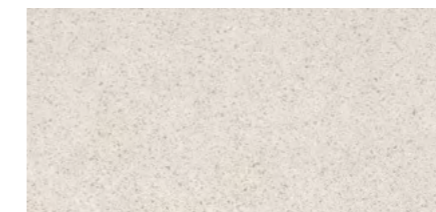


Deco Marmetta Grey 45x90 / 17,7"x35,5"

GF-20512D

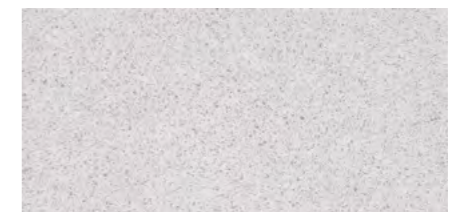


Mosaico **GF-20045**
Marmetta Cream
30x30 / 11,8"x11,8"



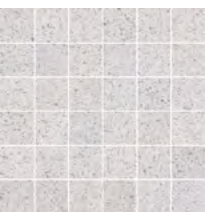
Marmetta Cream
32x62,5 / 12,6"x24,6"

GF-20355B



Marmetta Grey
32x62,5 / 12,6"x24,6"

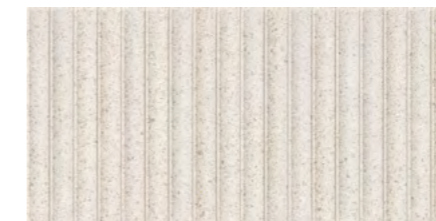
GF-20355B



Mosaico **GF-20045**
Marmetta Grey
30x30 / 11,8"x11,8"



Listelo **GF-10031**
Marmetta Cream
3,2x32 / 1,3"x12,6"



Deco Marmetta Cream
32x62,5 / 12,6"x24,6"

GF-20355D



Deco Marmetta Grey
32x62,5 / 12,6"x24,6"

GF-20355D



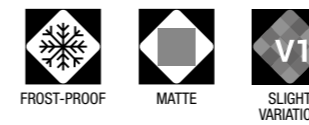
Listelo **GF-10031**
Marmetta Grey
3,2x32 / 1,3"x12,6"

PIEDRA | PORCELÁNICO ESMALTADO
STONE | GLAZED PORCELAIN TILES
PIERRE | GRES CERAME EMAILLÉ
STEIN | GLASIERTES FEINSTEINZEUG
КАМЕНЬ | КЕРАМОГРАНИТ ГЛАЗУРОВАННЫЙ

60x120 cm / 23,6"x47,3"
Rect 59,1x119,1 cm / 23,3"x46,9"
45x90 cm / 17,7"x35,5"
32x62,5 cm / 12,6"x24,6"



Rect. Marmetta Dark 59,1x119,1 / 23,3"x46,9" · Deco Marmetta Dark 32x62,5 / 12,6"x24,6"



CARACTERÍSTICAS TÉCNICAS
TECHNICAL DATA
CARACTÉRISTIQUES TECHNIQUES
TECHNISCHE CHARAKTERISTIKEN
ТЕХНИЧЕСКАЯ ХАРАКТЕРИСТИКА

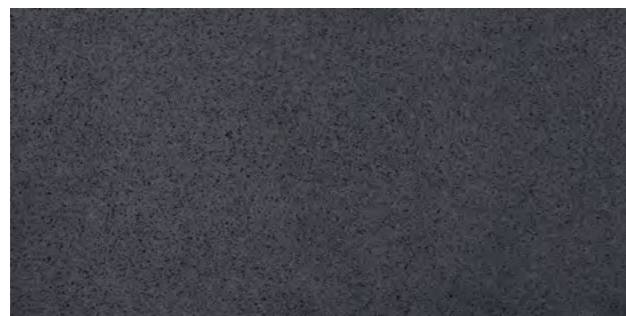
COLOR	FLEXIÓN ISO-10545-4	DUREZA MOHS/EN-101	ABRASIÓN-PEI ISO-10545-7	CUARTEO ISO-10545-11	RESISTENCIA AL ATAQUE QUÍMICO (ISO-10545-13)				R. HELADA ISO-10545-12	DESIZAMIENTO DIN 51130-R	DESIZAMIENTO UNE-ENV 12633	DCOF ANSI A137.1	CLASIFICACIÓN GAYAFORES
					MANCHAS	AGENTES LIMPIEZA	ADITIVOS PISCINAS	ÁCIDOS/BASES					
MARMETTA CREAM	≥ 35	7	IV	CUMPLE	5	A	A	LA/HA	CUMPLE	R-9	C1	0,42 ≤ DCOF < 0,60	D+
DECO MARMETTA CREAM	≥ 35	7	-	CUMPLE	5	A	A	LA/HA	CUMPLE	-	-	-	W
MARMETTA GREY	≥ 35	7	IV	CUMPLE	5	A	A	LA/HA	CUMPLE	R-9	C1	0,42 ≤ DCOF < 0,60	D+
DECO MARMETTA GREY	≥ 35	7	-	CUMPLE	5	A	A	LA/HA	CUMPLE	-	-	-	W
MARMETTA DARK	≥ 35	7	II	CUMPLE	5	A	A	LA/HA	CUMPLE	R-9	C1	0,42 ≤ DCOF < 0,60	B
DECO MARMETTA DARK	≥ 35	7	-	CUMPLE	5	A	A	LA/HA	CUMPLE	-	-	-	W

DESARROLLO GRÁFICO
GRAPHIC DEVELOPMENT
DÉVELOPPEMENT GRAPHIQUE
GRAFISCHE ENTWICKLUNG
ГРАФИЧЕСКОЕ РАЗВИТИЕ

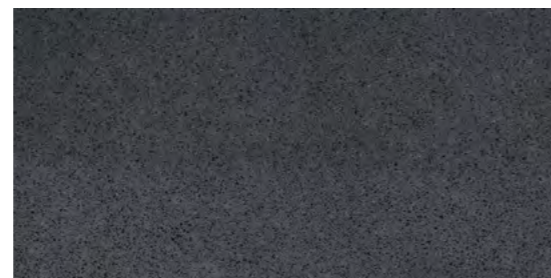
60x120 / 12 patterns 45x90 / 15 patterns DECO 45x90 / 10 patterns 32x62,5 / 20 patterns DECO 32x62,5 / 20 patterns

PACKING LIST

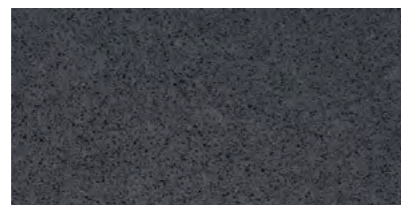
FORMATO	ESPESOR	ARTÍCULO	PZS / CJ	M2 / CJ	CJ / PAL	M2 / PAL	KG / CJ	KG / M2	KG / PAL
60x120	11,4	MARMETTA	2	1,44	30	43,20	36,72	25,50	1102
59,1x119,1	11,4	RECT. MARMETTA	2	1,41	27	38,07	36,00	25,50	971
45x90	11	MARMETTA / DECO MARMETTA	3	1,22	30	36,60	30,10	24,70	902
32x62,5	9	MARMETTA / DECO MARMETTA	5	1,00	48	48,00	19,90	19,90	955
30x30	9	MOSAICO MARMETTA	6	0,54	36	216 PZS.	9,84	1,64 / PZA	354
8x45	9	ROD. N MARMETTA	26	-	60	1560 PZS.	15,6	0,6 / PZA	936



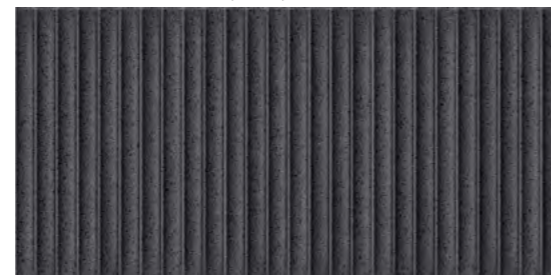
Rect. Marmetta Dark 59,1x119,1 / 23,3"x46,9"
Marmetta Dark 60x120 / 23,6"x47,3"



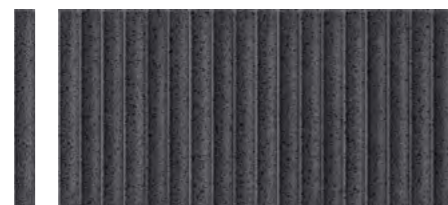
Marmetta Dark 45x90 / 17,7"x35,5" **GF-20512B**



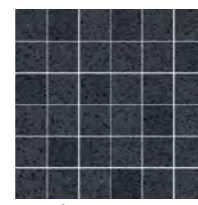
Marmetta Dark 32x62,5 / 12,6"x24,6" **GF-20355B**



Deco Marmetta Dark 45x90 / 17,7"x35,5" **GF-20512D**

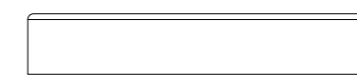


Listelo **GF-10031**
Marmetta Dark
3,2x32 / 1,3"x12,6"



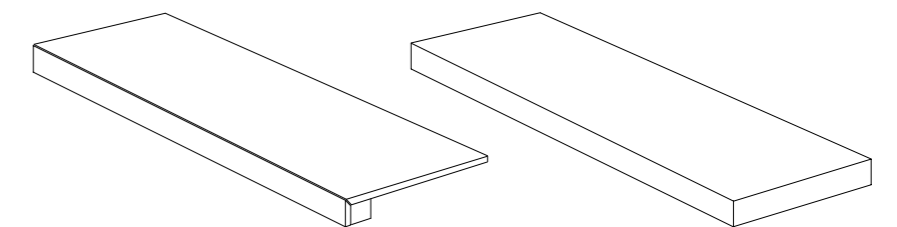
Mosaico **GF-20045**
Marmetta Dark
30x30 / 11,8"x11,8"

RODAPIÉ / disponible en todos los colores
BASEBOARD / available in all colours
PLINTHE / disponible dans toutes les couleurs
SOCKELFLIESE / in allen Farben lieferbar
ПЛИНТУС / доступны во всех цветах



GF-20086 Rodapié N 8x45

PIEZAS ESPECIALES / BAJO PEDIDO, disponible en todos los colores
SPECIAL PIECES / UNDER ORDER, available in all colours
PIÈCES SPÉCIALES / SUR DEMANDE, disponible dans toutes les couleurs
SPEZIALTEILE / AUF ANFRAGE, in allen Farben lieferbar
СПЕЦИАЛЬНЫЕ ЧАСТИ / ПО ЗАПРОСУ, доступны во всех цветах



Peldaño Técnico

Peldaño Técnico Escuadra

CORE

urbanessence



Rect. Core Grey 59,1x119,1 / 23,3"x46,9" · Cottage Antislip Grey 33,15x33,15 / 13,1"x13,1" **CLASE 3 / R12**

60x120 cm / 23,6"x47,3"
Rect 59,1x119,1 cm / 23,3"x46,9"
45x90 cm / 17,7"x35,5"
32x62,5 cm / 12,6"x24,6"

CEMENTO | PORCELÁNICO ESMALTADO
CONCRETE | GLAZED PORCELAIN TILES
CIMENT | GRES CERAME EMAILÉ
ZEMENT | GLASIERTES FEINSTEINZEUG
ЦЕМЕНТ | КЕРАМОГРАНИТ ГЛАЗУРОВАННЫЙ



Rect. Core Natural 59,1x119,1 / 23,3"x46,9" · Deco Core Natural 32x62,5 / 12,6"x24,6" · Listelo Core Natural 3,2x32 / 1,3"x12,6"

CEMENTO | PORCELÁNICO ESMALTADO
CONCRETE | GLAZED PORCELAIN TILES
CIMENT | GRES CERAME EMAILÉ
ZEMENT | GLASIERTES FEINSTEINZEUG
ЦЕМЕНТ | КЕРАМОГРАНИТ ГЛАЗУРОВАННЫЙ



Core Natural 32x62,5 / 12,6"x24,6" · Deco Core Natural 32x62,5 / 12,6"x24,6"

60x120 cm / 23,6"x47,3"
Rect 59,1x119,1 cm / 23,3"x46,9"
45x90 cm / 17,7"x35,5"
32x62,5 cm / 12,6"x24,6"



Rect. Core Greige 59,1x119,1 / 23,3"x46,9" · Deco Core Greige 32x62,5 / 12,6"x24,6"

CEMENTO | PORCELÁNICO ESMALTADO
CONCRETE | GLAZED PORCELAIN TILES
CIMENT | GRES CERAME EMAILLÉ
ZEMENT | GLASIERTES FEINSTEINZEUG
ЦЕМЕНТ | КЕРАМОГРАНИТ ГЛАЗУРОВАННЫЙ

60x120 cm / 23,6"x47,3"
Rect 59,1x119,1 cm / 23,3"x46,9"
45x90 cm / 17,7"x35,5"
32x62,5 cm / 12,6"x24,6"



Rect. Core Almond 59,1x119,1 / 23,3"x46,9" · Deco Core Almond 32x62,5 / 12,6"x24,6" · Listelo Core Almond 3,2x32 / 1,3"x12,6"



Deco Core Greige 32x62,5 / 12,6"x24,6"



Deco Core Grey 32x62,5 / 12,6"x24,6"



Deco Core Natural 32x62,5 / 12,6"x24,6"
Listelo Core Natural 3,2x32 / 1,3"x12,6"

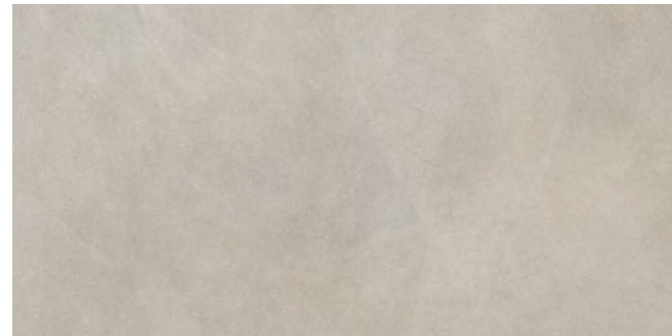
CEMENTO | PORCELÁNICO ESMALTADO
CONCRETE | GLAZED PORCELAIN TILES
CIMENT | GRES CERAME EMAILLÉ
ZEMENT | GLASIERTES FEINSTEINZEUG
ЦЕМЕНТ | КЕРАМОГРАНИТ ГЛАЗУРОВАННЫЙ

60x120 cm / 23,6"x47,3"
Rect 59,1x119,1 cm / 23,3"x46,9"
45x90 cm / 17,7"x35,5"
32x62,5 cm / 12,6"x24,6"



Rect. Core Grey 59,1x119,1 / 23,3"x46,9"
Core Grey 60x120 / 23,6"x47,3"

GF-20552B
GF-20551B



Rect. Core Greige 59,1x119,1 / 23,3"x46,9"
Core Greige 60x120 / 23,6"x47,3"

GF-20552B
GF-20551B



Rect. Core Almond 59,1x119,1 / 23,3"x46,9"
Core Almond 60x120 / 23,6"x47,3"

GF-20552B
GF-20551B



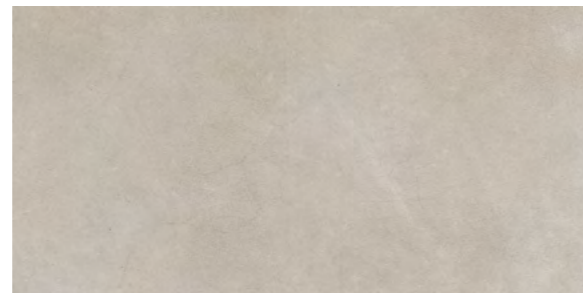
Rect. Core Natural 59,1x119,1 / 23,3"x46,9"
Core Natural 60x120 / 23,6"x47,3"

GF-20552B
GF-20551B



Core Grey 45x90 / 17,7"x35,5"

GF-20512B



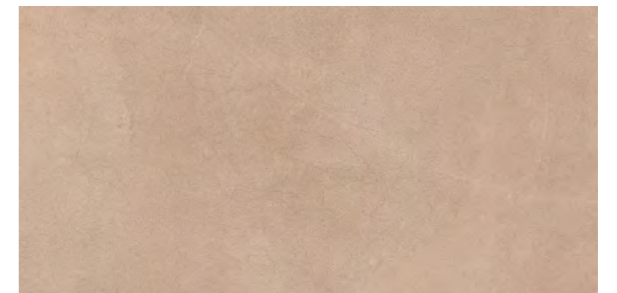
Core Greige 45x90 / 17,7"x35,5"

GF-20512B



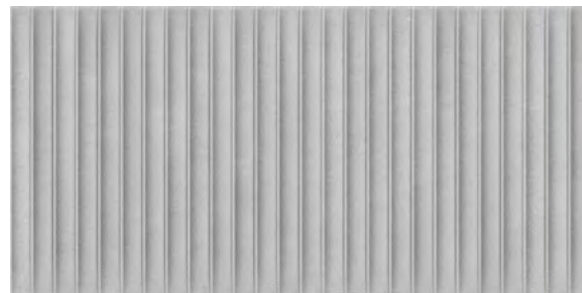
Core Almond 45x90 / 17,7"x35,5"

GF-20512B



Core Natural 45x90 / 17,7"x35,5"

GF-20512B



Deco Core Grey 45x90 / 17,7"x35,5"

GF-20512D



Deco Core Greige 45x90 / 17,7"x35,5"

GF-20512D



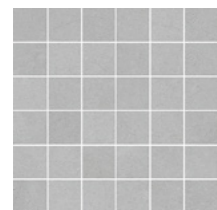
Deco Core Almond 45x90 / 17,7"x35,5"

GF-20512D

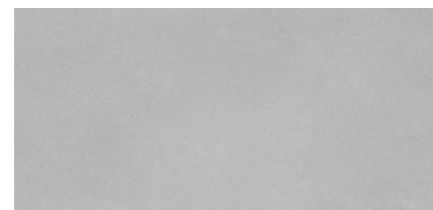


Deco Core Natural 45x90 / 17,7"x35,5"

GF-20512D

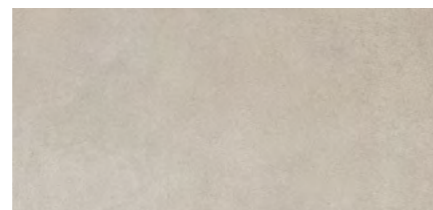


Mosaico **GF-20045**
Core Grey
30x30 / 11,8"x11,8"



Core Grey
32x62,5 / 12,6"x24,6"

GF-20355B



Core Greige
32x62,5 / 12,6"x24,6"

GF-20355B

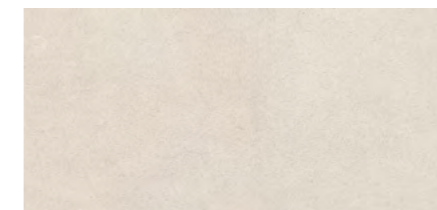


Mosaico **GF-20045**
Core Greige
30x30 / 11,8"x11,8"



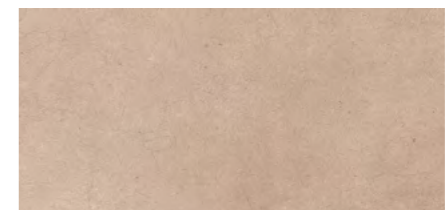
Mosaico **GF-20045**
Core Almond
30x30 / 11,8"x11,8"

GF-20355B



Core Almond
32x62,5 / 12,6"x24,6"

GF-20355B



Core Natural
32x62,5 / 12,6"x24,6"

GF-20355B



Mosaico **GF-20045**
Core Natural
30x30 / 11,8"x11,8"



Listelo **GF-10031**
Core Grey
3,2x32 / 1,3"x12,6"



Deco Core Grey
32x62,5 / 12,6"x24,6"

GF-20355D



Deco Core Greige
32x62,5 / 12,6"x24,6"

GF-20355D



Listelo **GF-10031**
Core Greige
3,2x32 / 1,3"x12,6"



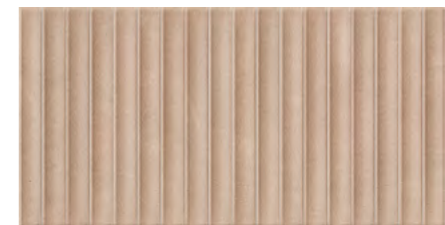
Listelo **GF-10031**
Core Almond
3,2x32 / 1,3"x12,6"

GF-20355D



Deco Core Almond
32x62,5 / 12,6"x24,6"

GF-20355D



Deco Core Natural
32x62,5 / 12,6"x24,6"

GF-20355D



Listelo **GF-10031**
Core Natural
3,2x32 / 1,3"x12,6"

CEMENTO | PORCELÁNICO ESMALTADO
CONCRETE | GLAZED PORCELAIN TILES
CIMENT | GRES CERAME EMAILLÉ
ZEMENT | GLASIERTES FEINSTEINZEUG
ЦЕМЕНТ | КЕРАМОГРАНИТ ГЛАЗУРОВАННЫЙ

60x120 cm / 23,6"x47,3"
Rect 59,1x119,1 cm / 23,3"x46,9"
45x90 cm / 17,7"x35,5"
32x62,5 cm / 12,6"x24,6"



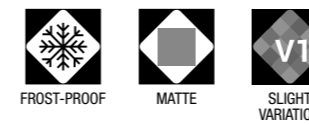
Rect. Core Almond 59,1x119,1 / 23,3"x46,9" · Cottage Almond 33,15x33,15 / 13,1"x13,1" · Taco Deco Cottage Almond 16,5x16,5 / 6,5"x6,5"



Core Grey 32x62,5 / 12,6"x24,6" · Cottage Grey 33,15x33,15 / 13,1"x13,1" · Taco Deco Cottage Grey 16,5x16,5 / 6,5"x6,5"



Rect. Core Natural 59,1x119,1 / 23,3"x46,9"
Cottage Antislip Natural 33,15x33,15 / 13,1"x13,1" **CLASE 3 / R12**



CARACTERÍSTICAS TÉCNICAS
TECHNICAL DATA
CARACTÉRISTIQUES TECHNIQUES
TECHNISCHE CHARAKTERISTIKEN
ТЕХНИЧЕСКАЯ ХАРАКТЕРИСТИКА

COLOR	FLEXIÓN ISO-10545-4	DUREZA MOHS/EN-101	ABRASIÓN-PEI ISO-10545-7	CUARTEO ISO-10545-11	RESISTENCIA AL ATAQUE QUÍMICO (ISO-10545-13)				R. HELADA ISO-10545-12	DESPLAZAMIENTO DIN 51130-R	DESPLAZAMIENTO UNE-ENV 12633	DCOF ANSI A137.1	CLASIFICACIÓN GAYAFORES
					MANCHAS	AGENTES LIMPIEZA	ADITIVOS PISCINAS	ÁCIDOS/BASES					
CORE ALMOND	≥ 35	7	IV	CUMPLE	5	A	A	LA/HA	CUMPLE	R-9	C1	0,42 ≤ DCOF < 0,60	D+
DECO CORE ALMOND	≥ 35	7	-	CUMPLE	5	A	A	LA/HA	CUMPLE	-	-	-	W
CORE GREIGE	≥ 35	7	IV	CUMPLE	5	A	A	LA/HA	CUMPLE	R-9	C1	0,42 ≤ DCOF < 0,60	D+
DECO CORE GREIGE	≥ 35	7	-	CUMPLE	5	A	A	LA/HA	CUMPLE	-	-	-	W
CORE GREY	≥ 35	7	IV	CUMPLE	5	A	A	LA/HA	CUMPLE	R-9	C1	0,42 ≤ DCOF < 0,60	D+
DECO CORE GREY	≥ 35	7	-	CUMPLE	5	A	A	LA/HA	CUMPLE	-	-	-	W
CORE NATURAL	≥ 35	7	III	CUMPLE	5	A	A	LA/HA	CUMPLE	R-9	C1	0,42 ≤ DCOF < 0,60	D
DECO CORE NATURAL	≥ 35	7	-	CUMPLE	5	A	A	LA/HA	CUMPLE	-	-	-	W

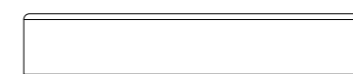
DESARROLLO GRÁFICO
GRAPHIC DEVELOPMENT
DÉVELOPPEMENT GRAPHIQUE
GRAFISCHE ENTWICKLUNG
ГРАФИЧЕСКОЕ РАЗВИТИЕ

60x120 / 12 patterns 45x90 / 15 patterns DECO 45x90 / 15 patterns 32x62,5 / 20 patterns DECO 32x62,5 / 20 patterns

PACKING LIST

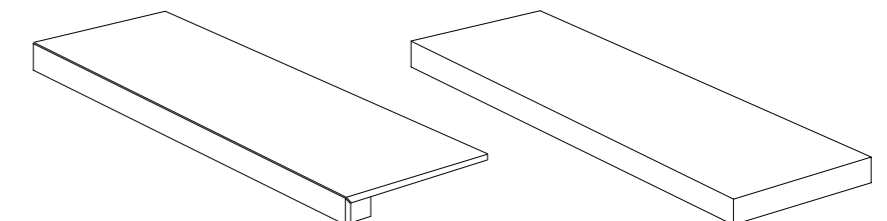
FORMATO	ESPESOR	ARTÍCULO	PZS / CJ	M2 / CJ	CJ / PAL	M2 / PAL	KG / CJ	KG / M2	KG / PAL
60x120	11,4	CORE	2	1,44	30	43,20	36,72	25,50	1102
59,1x119,1	11,4	RECT. CORE	2	1,41	27	38,07	36,00	25,50	971
45x90	11	CORE / DECO CORE	3	1,22	30	36,60	30,10	24,70	902
32x62,5	9	CORE / DECO CORE	5	1,00	48	48,00	19,90	19,90	955
30x30	9	MOSAICO CORE	6	0,54	36	216 PZS.	9,84	1,64 / PZA	354
8x45	9	ROD. N CORE	26	-	60	1560 PZS.	15,6	0,6 / PZA	936

RODAPIÉ / disponible en todos los colores
BASEBOARD / available in all colours
PLINTHE / disponible dans toutes les couleurs
SOCKELFLIESE / in allen Farben lieferbar
ПЛИНТУС / доступны во всех цветах



GF-20086 Rodapié N 8x45

PIEZAS ESPECIALES / BAJO PEDIDO, disponible en todos los colores
SPECIAL PIECES / UNDER ORDER, available in all colours
PIÈCES SPÉCIALES / SUR DEMANDE, disponible dans toutes les couleurs
SPEZIALTEILE / AUF ANFRAGE, in allen Farben lieferbar
СПЕЦИАЛЬНЫЕ ЧАСТИ / ПО ЗАПРОСУ, доступны во всех цветах



Peldaño Técnico

Peldaño Técnico Escuadra

COTTAGE

cottoessence



Cottage Greige 33,15x33,15 / 13,1"x13,1" · Taco Deco Cottage Greige 16,5x16,5 / 6,5"x6,5" · Deco Core Greige 32x62,5 / 12,6"x24,6" · Listelo Core Greige 3,2x32 / 1,3"x12,6"

33,15x33,15 cm / 13,1"x13,1"
16,5x16,5 cm / 6,5"x6,5"

COTTO | PORCELÁNICO ESMALTADO
COTTO | GLAZED PORCELAIN TILES
COTTO | GRES CERAME EMAILÉ
COTTO | GLASIERTES FEINSTEINZEUG
КОТТО | КЕРАМОГРАНИТ ГЛАЗУРОВАННЫЙ



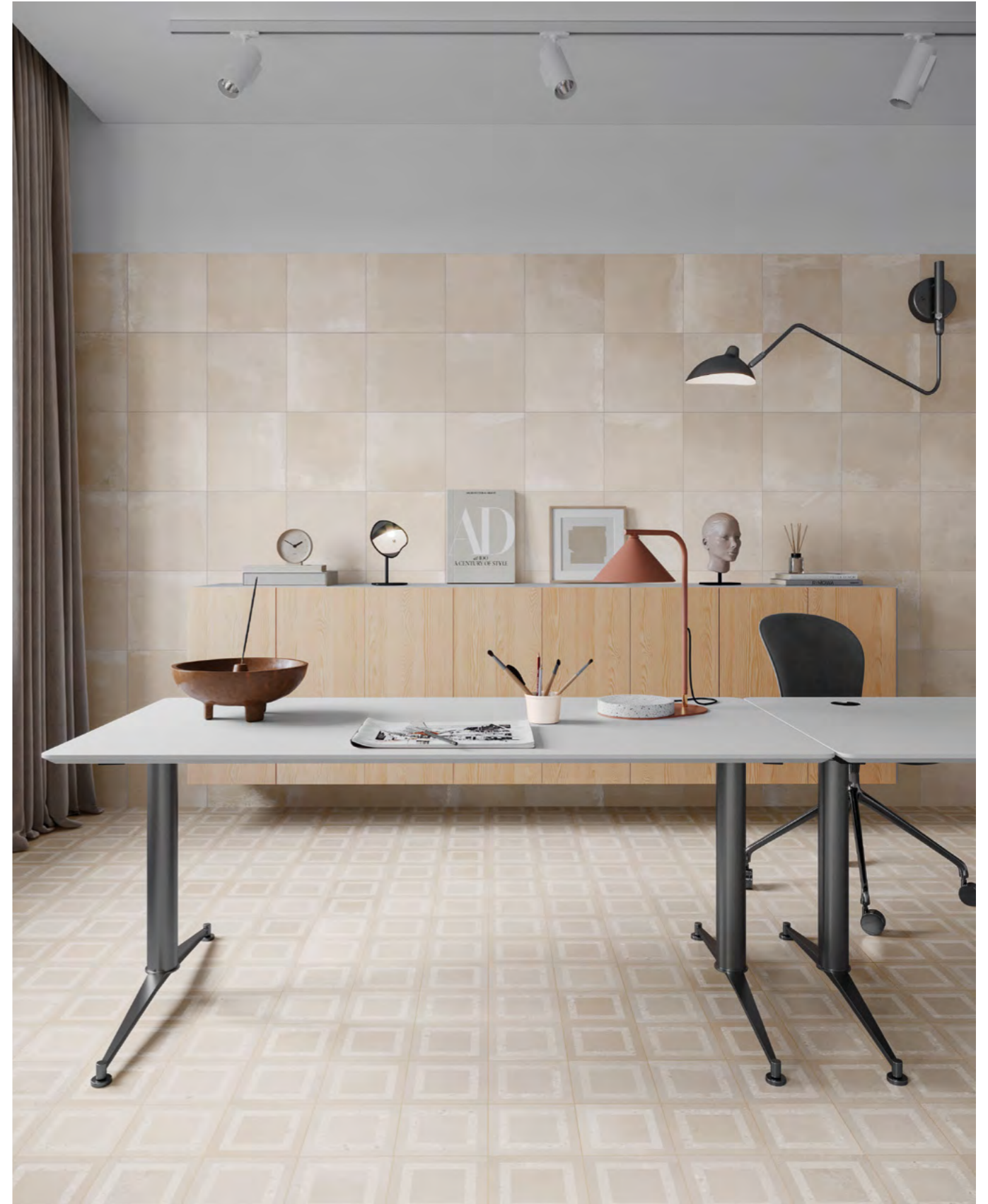
Cottage Grey 33,15x33,15 / 13,1"x13,1" · Taco Deco Cottage Grey 16,5x16,5 / 6,5"x6,5" · Deco Core Grey 32x62,5 / 12,6"x24,6" · Listelo Core Grey 3,2x32 / 1,3"x12,6"
Rect. Core Grey 59,1x119,1 / 23,3"x46,9"

COTTO | PORCELÁNICO ESMALTADO
COTTO | GLAZED PORCELAIN TILES
COTTO | GRES CERAME EMAILLÉ
COTTO | GLASIERTES FEINSTEINZEUG
КОТТО | КЕРАМОГРАНИТ ГЛАЗУРОВАННЫЙ



Cottage Natural 33,15x33,15 / 13,1"x13,1" · Taco Deco Cottage Natural 16,5x16,5 / 6,5"x6,5"

33,15x33,15 cm / 13,1"x13,1"
16,5x16,5 cm / 6,5"x6,5"



Cottage Almond 33,15x33,15 / 13,1"x13,1" · Taco Deco Cottage Almond 16,5x16,5 / 6,5"x6,5"

COTTO | PORCELÁNICO ESMALTADO
COTTO | GLAZED PORCELAIN TILES
COTTO | GRES CERAME EMAILLÉ
COTTO | GLASIERTES FEINSTEINZEUG
КОТТО | КЕРАМОГРАНИТ ГЛАЗУРОВАННЫЙ

33,15x33,15 cm / 13,1"x13,1"
16,5x16,5 cm / 6,5"x6,5"



Cottage Almond 33,15x33,15 / 13,1"x13,1" · Taco Deco Cottage Almond 16,5x16,5 / 6,5"x6,5" · Deco Core Almond 32x62,5 / 12,6"x24,6" · Listelo Core Almond 3,2x32 / 1,3"x12,6"

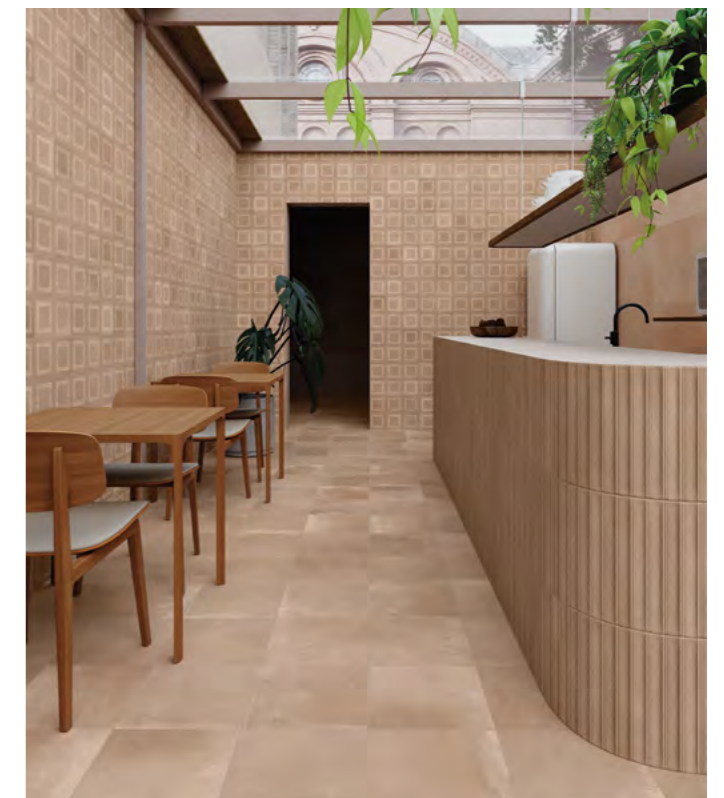


Rect. Core Grey 59,1x119,1 / 23,3"x46,9" · Cottage Grey 33,15x33,15 / 13,1"x13,1" · Taco Deco Cottage Grey 16,5x16,5 / 6,5"x6,5" · Cottage Antislip Grey 33,15x33,15 / 13,1"x13,1" **CLASE 3 / R12**



Cottage Greige 33,15x33,15 / 13,1"x13,1"
Taco Deco Cottage Greige 16,5x16,5 / 6,5"x6,5"

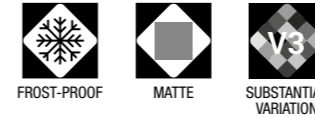
www.gayafores.es



Cottage Natural 33,15x33,15 / 13,1"x13,1" · Taco Deco Cottage Natural 16,5x16,5 / 6,5"x6,5"
Deco Core Natural 32x62,5 / 12,6"x24,6" · Listelo Core Natural 3,2x32 / 1,3"x12,6"
Rect. Core Natural 59,1x119,1 / 23,3"x46,9"

COTTO | PORCELÁNICO ESMALTADO
COTTO | GLAZED PORCELAIN TILES
COTTO | GRES CERAME EMAILLÉ
COTTO | GLASIERTES FEINSTEINZEUG
COTTO | КЕРАМОГРАНИТ ГЛАЗУРОВАННЫЙ

33,15x33,15 cm / 13,1"x13,1"
16,5x16,5 cm / 6,5"x6,5"



CARACTERÍSTICAS TÉCNICAS
TECHNICAL DATA
CARACTÉRISTIQUES TECHNIQUES
TECHNISCHE CHARAKTERISTIKEN
ТЕХНИЧЕСКАЯ ХАРАКТЕРИСТИКА



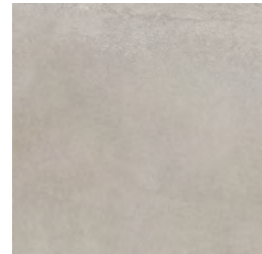
Cottage Antislip **GF-20300X**
Almond **CLASE 3 / R12**
33,15x33,15 / 13,1"x13,1"
Cottage Almond **GF-20300B**
33,15x33,15 / 13,1"x13,1"



Deco Cottage **GF-20300D**
Almond
33,15x33,15 / 13,1"x13,1"



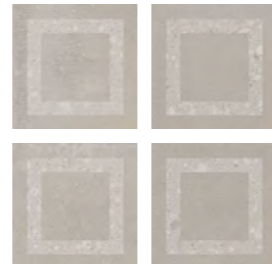
Taco Deco **GF-20305D**
Cottage Almond
16,5x16,5 / 6,5"x6,5"



Cottage Antislip **GF-20300X**
Greige **CLASE 3 / R12**
33,15x33,15 / 13,1"x13,1"
Cottage Greige **GF-20300B**
33,15x33,15 / 13,1"x13,1"



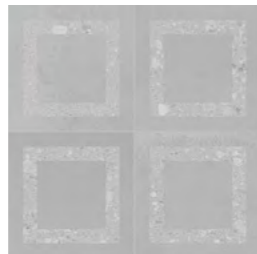
Deco Cottage **GF-20300D**
Greige
33,15x33,15 / 13,1"x13,1"



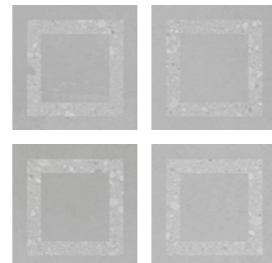
Taco Deco **GF-20305D**
Cottage Greige
16,5x16,5 / 6,5"x6,5"



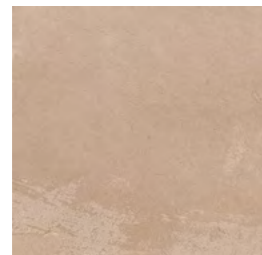
Cottage Antislip **GF-20300X**
Grey **CLASE 3 / R12**
33,15x33,15 / 13,1"x13,1"
Cottage Grey **GF-20300B**
33,15x33,15 / 13,1"x13,1"



Deco Cottage **GF-20300D**
Grey
33,15x33,15 / 13,1"x13,1"



Taco Deco **GF-20305D**
Cottage Grey
16,5x16,5 / 6,5"x6,5"



Cottage Antislip **GF-20300X**
Natural **CLASE 3 / R12**
33,15x33,15 / 13,1"x13,1"
Cottage Natural **GF-20300B**
33,15x33,15 / 13,1"x13,1"



Deco Cottage **GF-20300D**
Natural
33,15x33,15 / 13,1"x13,1"



Taco Deco **GF-20305D**
Cottage Natural
16,5x16,5 / 6,5"x6,5"

COLOR	FLEXIÓN ISO-10545-4	DUREZA MOHS/EN-101	ABRASIÓN-PEI ISO-10545-7	CUARTEO ISO-10545-11	RESISTENCIA AL ATAQUE QUÍMICO (ISO-10545-13)				R. HELADA ISO-10545-12	DESPLIZAMIENTO DIN 51130-R	DESPLIZAMIENTO UNE-ENV 12633	DCOF ANSI A137.1	CLASIFICACIÓN GAYAFORES
					MANCHAS	AGENTES LIMPIEZA	ADITIVOS PISCINAS	ÁCIDOS/BASES					
COTTAGE ALMOND	≥ 35	7	IV	CUMPLE	5	A	A	LA/HA	CUMPLE	R-9	C1	0,42 ≤ DCOF < 0,60	D+
COTTAGE ANTISLIP ALMOND	≥ 35	8	IV	CUMPLE	5	A	A	LA/HA	CUMPLE	R-12	C3	DCOF ≥ 0,60	E
DECO COTTAGE ALMOND	≥ 35	7	IV	CUMPLE	5	A	A	LA/HA	CUMPLE	R-9	C1	0,42 ≤ DCOF < 0,60	D+
COTTAGE GREIGE	≥ 35	7	IV	CUMPLE	5	A	A	LA/HA	CUMPLE	R-9	C1	0,42 ≤ DCOF < 0,60	D+
COTTAGE ANTISLIP GREIGE	≥ 35	8	IV	CUMPLE	5	A	A	LA/HA	CUMPLE	R-12	C3	DCOF ≥ 0,60	E
DECO COTTAGE GREIGE	≥ 35	7	IV	CUMPLE	5	A	A	LA/HA	CUMPLE	R-9	C1	0,42 ≤ DCOF < 0,60	D+
COTTAGE GREY	≥ 35	7	IV	CUMPLE	5	A	A	LA/HA	CUMPLE	R-9	C1	0,42 ≤ DCOF < 0,60	D+
COTTAGE ANTISLIP GREY	≥ 35	8	IV	CUMPLE	5	A	A	LA/HA	CUMPLE	R-12	C3	DCOF ≥ 0,60	E
DECO COTTAGE GREY	≥ 35	7	IV	CUMPLE	5	A	A	LA/HA	CUMPLE	R-9	C1	0,42 ≤ DCOF < 0,60	D+
COTTAGE NATURAL	≥ 35	7	IV	CUMPLE	5	A	A	LA/HA	CUMPLE	R-9	C1	0,42 ≤ DCOF < 0,60	D+
COTTAGE ANTISLIP NATURAL	≥ 35	8	IV	CUMPLE	5	A	A	LA/HA	CUMPLE	R-12	C3	DCOF ≥ 0,60	E
DECO COTTAGE NATURAL	≥ 35	7	IV	CUMPLE	5	A	A	LA/HA	CUMPLE	R-9	C1	0,42 ≤ DCOF < 0,60	D+

DESARROLLO GRÁFICO
GRAPHIC DEVELOPMENT
DÉVELOPPEMENT GRAPHIQUE
GRAFISCHE ENTWICKLUNG
ГРАФИЧЕСКОЕ РАЗВИТИЕ

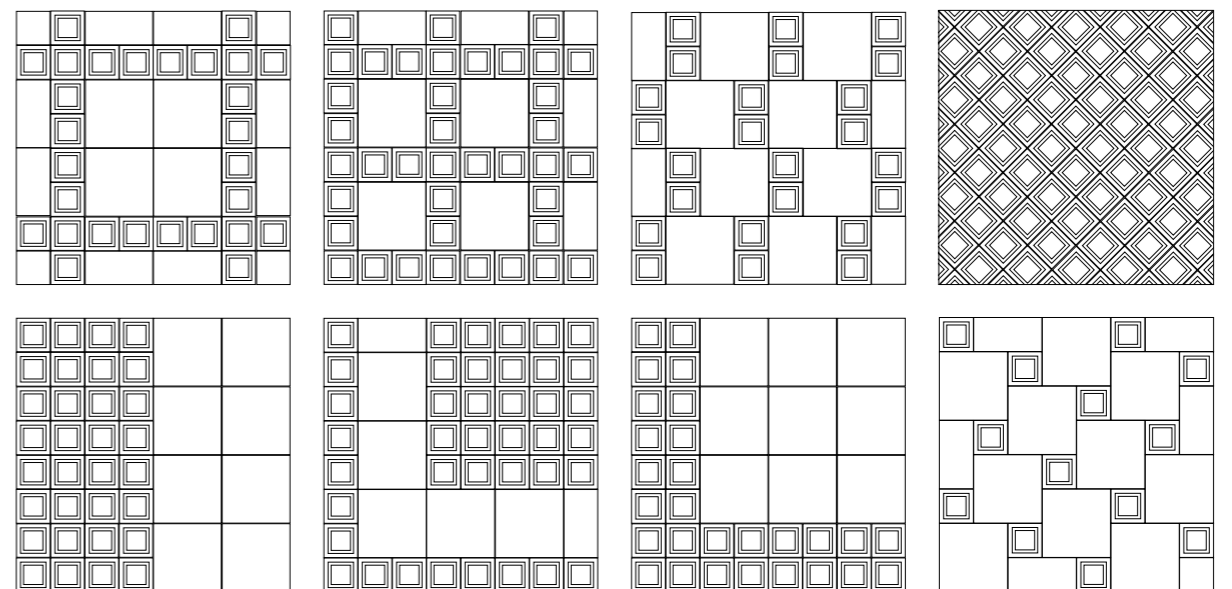
33,15x33,15 / 30 patterns

DECO 33,15x33,15 / 20 patterns

TACO DECO 16,5x16,5 / 80 patterns

PACKING LIST

FORMATO	ESPESOR	ARTÍCULO	PZS / CJ	M2 / CJ	CJ / PAL	M2 / PAL	KG / CJ	KG / M2	KG / PAL
33,15x33,15	7,6	COTTAGE / DECO COTTAGE	12	1,32	48	63,36	22,04	16,70	1058
16,5x16,5	7,6	TACO DECO COTTAGE	10	0,55	108	59,08	9,14	16,70	987



Sugerencias de colocación
Laying suggestions
Conseils pour la pose
Verlegetipps
Рекомендации по укладке

gayafores**essence**

GAYAFORES

since 1897

CV-20. Km7 • Apdo. Correos 36 • 12200 Onda (Castellón) Spain
Tel Nacional +34 964 62 62 62 Tel Export +34 964 62 61 60
Tel Administration +34 964 62 63 63 Fax +34 964 62 60 00
info@gayafores.es



www.gayafores.es