

# ESMALTADOS CLASSIC GLAZED TILES CLASSIC



PAVIMENTOS FLOOR TILES



Albany Teka



Isla Malta



Parma



Pisa

FORMATOS  
SIZES

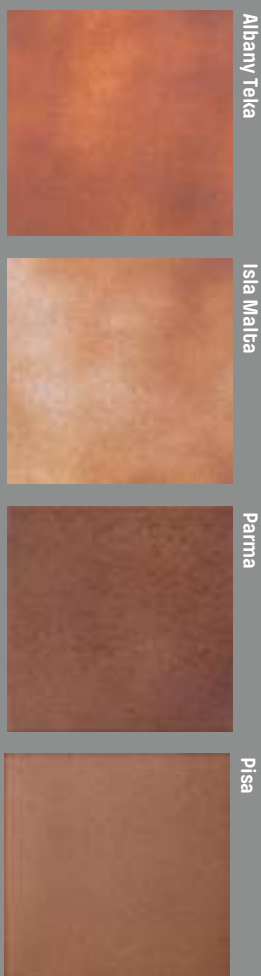
33x33 · 25x25 cm.



	ESMALTADO GLAZED	
	Características dimensionales Dimension tolerance	<1,25% · máx 2 mm.
	Absorción de agua Water absorption	3<E≤6%
	Coef. Dilatación térmica lineal Linear thermal expansion coefficient	3,8x10 <sup>-6</sup> °xC <sup>-1</sup>
	Resistencia a la flexión Breaking Strength	20N/mm <sup>2</sup>
	Resistencia a la abrasión superficial Resistance to surface abrasion	Teka/Parma/ Pisa PEI 2 Malta PEI 3
	Desgaste tránsito peatonal Erosion to pedestrian transit	Malta H4
	Resistencia al rayado (método Mohs) Scratch hardness of surface (Mohs Method)	Teka/Malta 8
	Resistencia a las manchas Resistance to stains	clase 5 CLASS 5
	Péndulo (CTE) Not required out of Spain	Teka/Parma/ Pisa: 2 Malta: 3
	A pie descalzo Barefoot slip resistance	Teka/Malta C
	A pie calzado Slip resistance with footwear	Teka: R10 Pisa/Malta: R11 Parma: <R9
	Resistencia al cuarteo Crazing resistance	si/yes
	Extrusión Extruded tiles	✓
	Resistencia a la helada Frost resistance	✓
	Resistencia al choque térmico Resistance to thermal shock	✓
	Resistencia química Chemical resistance	✓

# ESMALTADOS CLASSIC GLAZED TILES CLASSIC

Colores / Colors



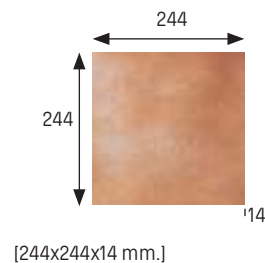
## Base 33x33 Tile 33x33

Albany Teka Cod. 901361 · [MC485]



## Base 25x25 Tile 25x25

Albany Teka Cod. 900897 · [MC425]  
Isla Malta Cod. 901211 · [MC425]  
Parma Cod. 902830 · [MC425]  
Pisa Cod. 901610 · [MC425]



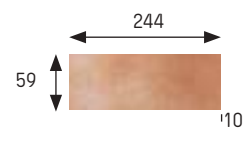
## Base 12x25 Tile 12x25

Albany Teka Cod. 901597 · [MC425]  
Isla Malta Cod. 903831 · [MC425]  
Parma Cod. 902831 · [MC425]  
Pisa Cod. 901611 · [MC425]



## Base 6x25\* Tile 6x25\*

Albany Teka Cod. 902191 · [MC470]  
Isla Malta Cod. 902948 · [MC470]  
Parma Cod. 903832 · [MC470]  
Pisa Cod. 903553 · [MC470]



\*Se obtiene a partir de base de 12x25 premarcada  
\*(It is obtained from 12x25 pre-marked tile)

	Espesor (mm) Thickness (mm)	U.M.*	U.M./caja U.M./box	U.M./Palet U.M./Pallet	Pzs./U.M. Pcs./U.M.	Pzs./caja Pcs/box	Kg./U.M. Kg./U.M.	Kg./caja Kg./box	Kg./Palet Kg./Pallet
<b>Base 33x33</b> Tile 33x33	16	m <sup>2</sup> sqm	0,666	42,624	9	6	32,6	21,75	1391
<b>Base 25x25</b> Tile 25x25	14	m <sup>2</sup> sqm	1	60	16	16	25	12,5	1499
<b>Base 12x25</b> Tile 12x25	14	m <sup>2</sup> sqm	0,50	60	32	16	25	12,5	1499
<b>Base 6x25 (12x25 premarcada)</b> Tile 6x25 (Permarked tile 12x25)	10	m <sup>2</sup> sqm	0,64	76,8	64	40	17	10,640	1276,8

\*Unidad de Medida. Los artículos medidos en M<sup>2</sup> o ML se sirven contando la junta normal entre piezas  
\*Unit of measure. Items measured in SQM or LM are delivered assuming average joint between pieces

\*\*Consultar datos de embalaje a fábrica según espesor  
\*\*Ask factory for packing information depending of thickness



# ESMALTADOS CLASSIC GLAZED TILES CLASSIC

Piezas especiales Special pieces

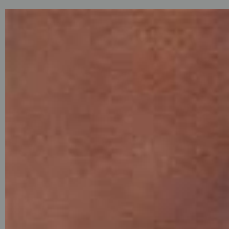
Colores / Colors



Albany Teka



Isla Malta



Parma



Pisa

## Peldaño redondeado 33 Rounded stair-tread 33

Albany Teka Cod. 901580 · [P2280]



[325x330x18 mm.]

## Peldaño redondeado 25 Rounded stair-tread 25

Albany Teka Cod. 900900 · [P2220]

Isla Malta Cod. 901212 · [P2220]

Parma Cod. 902832 · [P2220]

Pisa Cod. 901612 · [P2220]



[244x330x18 mm.]

## Esquina redondeada Rounded stair-tread corner

Albany Teka Cod. 900901 · [P2555]

Isla Malta Cod. 901214 · [P2555]

Parma Cod. 902833 · [P2555]

Pisa Cod. 901617 · [P2555]



[330x330x18 mm.]

## Vierteaguas 25x33 Wash 25x33

Albany Teka Cod. 900994 · [P2190]

Isla Malta Cod. 901217 · [P2190]

Parma Cod. 901399 · [P2190]



[244x330x21 mm.]

## Rodapié 33 Skirting board 33

Albany Teka Cod. 901582 · [ML170]



[325x80x16 mm.]

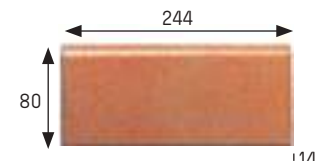
## Rodapié 25 Skirting board 25

Albany Teka Cod. 900904 · [ML150]

Isla Malta Cod. 901213 · [ML150]

Parma Cod. 902836 · [ML150]

Pisa Cod. 901615 · [ML150]



[244x80x14 mm.]

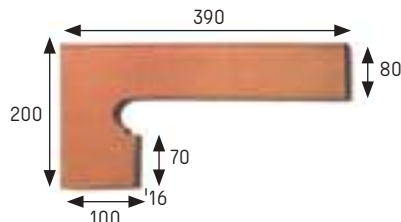
## Zanquín izda. String left side

Albany Teka Cod. 900903 · [P2150]

Isla Malta Cod. 901216 · [P2150]

Parma Cod. 902834 · [P2150]

Pisa Cod. 901613 · [P2150]



[390x80/200x100 x16 mm.]

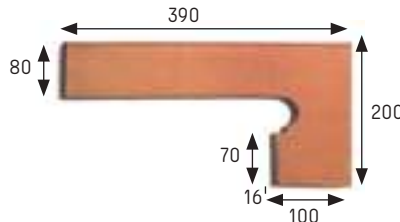
## Zanquín dcha. String right side

Albany Teka Cod. 900902 · [P2150]

Isla Malta Cod. 901215 · [P2150]

Parma Cod. 902835 · [P2150]

Pisa Cod. 901614 · [P2150]



[390x80/200x100 x16 mm.]

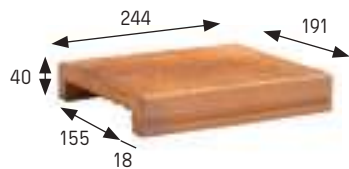
## Pasamanos 15,5 Handrail 15,5

Albany Teka Cod. 900950 · [P2170]

Isla Malta Cod. 901219 · [P2170]

Parma Cod. 901398 · [P2170]

Pisa Cod. 903929 · [P2190]



[244x191x40 x18 mm.]

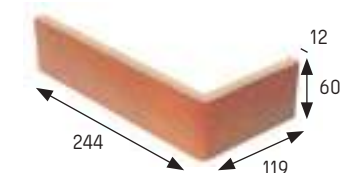
## Ángulo fachada Facade angle

Albany Teka Cod. 901464 · [P2070]

Isla Malta Cod. 901467 · [P2070]

Parma Cod. 901396 · [P2070]

Pisa Cod. 904547 · [P2070]



[244x119x60 x12 mm.]

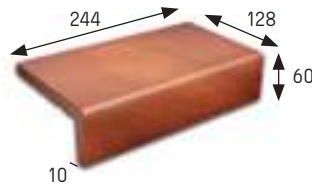
## Ángulo desigual Unequal edge

Albany Teka Cod. 904532 · [P2160]

Isla Malta Cod. 904533 · [P2160]

Parma Cod. 904534 · [P2160]

Pisa Cod. 904535 · [P2160]



[244x128x60 x10 mm.]

Anchura recomendada de la junta de colocación: 6 - 8 mm  
A 6 - 8 mm wide installation joint is recommended.



Parma 25x25

	Espeor (mm) Thickness (mm)	U.M.*	U.M./caja U.M./box	U.M./Palet U.M./Pallet	Pzs./U.M. Pcs./U.M.	Pzs./caja Pcs/box	Kg./U.M. Kg./U.M.	Kg./caja Kg./box	Kg./Palet Kg./Pallet
<b>Peldaño redondeado 33</b> Rounded stair-tread 33	18	Pz. Pc.	6	216	1	6	4,4	26,4	950
<b>Peldaño redondeado 25</b> Rounded stair-tread 25	18	Pz. Pc.	6	324	1	6	3,3	19,8	1069
<b>Esquina redondeada</b> Rounded stair-tread corner	18	Pz. Pc.	2	60	1	2	6	12	360
<b>Vieriteaguas 25x33</b> Wash 25x33	18	Pz. Pc.	6	324	1	6	3,13	18,78	1014
<b>Rodapié 33</b> Skirting board 33	16	ml lm	8	576	3	24	2,3	18	1296
<b>Rodapié 25</b> Skirting board 25	14	ml lm	11,25	450	4	45	2,5	27,7	1108
<b>Zanquín izda.</b> String left	16	Pz. Pc.	10	300	1	10	1,3	13	390
<b>Zanquín dcha.</b> String right	16	Pz. Pc.	10	300	1	10	1,3	13	390
<b>Pasamanos 15,5</b> Handrail 15,5	18	Pz. Pc.	8	320	1	8	2,3	18,3	731
<b>Ángulo fachada</b> Facade angle	12	Pz. Pc.	16	896	1	16	0,48	7,75	434
<b>Ángulo desigual</b> Unequal edge	10	Pz. Pc.	12	720	1	12	1,2	12,2	732

\*Unidad de Medida. Los artículos medidos en M<sup>2</sup> o ML se sirven contando la junta normal entre piezas  
 \*Unit of measure. Items measured in SQM or LM are delivered assuming average joint between pieces