

# ANTIC

Esmaltados Glazed Tiles

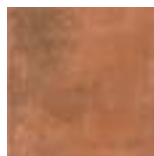


PAVIMENTOS FLOOR TILES



FORMATOS  
SIZES

25x25 · 33x33 cm.



Cuero



Marrón



Ceniza



Basalto



ESMALTADO  
GLAZED



Características dimensionales  
Dimension tolerance

<1,25% ·  
máx 2 mm.



Absorción de agua  
Water absorption

3<E≤6%



Coef. Dilatación termica lineal  
Linear thermal expansion coefficient

3,8x10<sup>-6</sup>xC<sup>-1</sup>



Resistencia a la flexión  
Breaking Strength

20N/mm<sup>2</sup>



Resistencia a la abrasión superficial  
Resistance to surface abrasion

Cuero  
Basalto-Marrón:  
PEI 3  
Ceniza: PEI 4



Resistencia a las manchas  
Resistance to stains

clase 5  
CLASS 5



Péndulo (CTE)  
Not required out of Spain

clase 1  
CLASS 1



A pie descalzo  
Barefoot slip resistance

B



A pie calzado  
Slip resistance with footwear

R10



Desgaste transito peatonal  
Erosion to pedestrian transit

H5



Resistencia al cuarteo  
Crazing resistance

si/yes



Extrusión  
Extruded tiles

✓



Resistencia a la helada  
Frost resistance

✓



Resistencia al choque térmico  
Resistance to thermal shock

✓



Resistencia química  
Chemical resistance

✓

# ANTIC

## PAVIMENTOS FLOOR TILES

### Colores / Colors



Cuero



Marrón



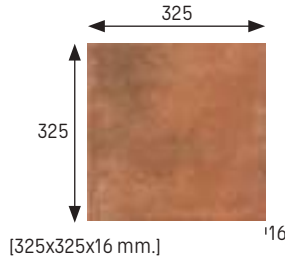
Ceniza



Basalto

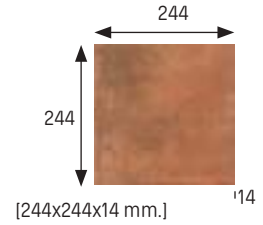
### Base 33x33 Tile 33x33

<b>Cuero</b>	Cod. 902890 · [MC510]
<b>Marrón</b>	Cod. 902904 · [MC510]
<b>Ceniza</b>	Cod. 902918 · [MC510]
<b>Basalto</b>	Cod. 902911 · [MC510]



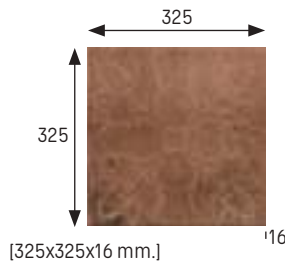
### Base 25x25 Tile 25x25

<b>Cuero</b>	Cod. 903937 · [MC430]
<b>Marrón</b>	Cod. 903938 · [MC430]
<b>Ceniza</b>	Cod. 903940 · [MC430]
<b>Basalto</b>	Cod. 903939 · [MC430]



### Base Decorados 33x33 Decor Tile 33x33

<b>Cuero</b>	Cod. 902896 · [MC510]
<b>Marrón</b>	Cod. 902910 · [MC510]
<b>Ceniza</b>	Cod. 902924 · [MC510]
<b>Basalto</b>	Cod. 902917 · [MC510]



Decorado / Decor

	Espesor (mm) Thickness (mm)	U.M.*	U.M./caja U.M./box	U.M./Palet U.M./Pallet	Pzs./U.M. Pcs./U.M.	Pzs./caja Pcs./box	Kg./U.M. Kg./U.M.	Kg./caja Kg./box	Kg./Palet Kg./Pallet
<b>Base 33x33</b> Tile 33x33	16	m <sup>2</sup> sqm	0,66	42,624	9	6	32,6	21,75	1391
<b>Base 25x25</b> Tile 25x25	14	m <sup>2</sup> sqm	1	60	16	16	25	12,5	1499
<b>Base decorados 33x33</b> Decor Tile 33x33	16	m <sup>2</sup> sqm	0,66	42,624	9	6	32,6	21,75	1391

\*Unidad de Medida. Los artículos medidos en M<sup>2</sup> o ML se sirven contando la junta normal entre piezas  
\*Unit of measure. Items measured in SQM or LM are delivered assuming average joint between pieces



# ANTIC Piezas especiales Special pieces

Colores / Colors



Cuero



Marrón



Ceniza



Basalto

### Peldaño redondeado 33 Rounded stair-tread 33

<b>Cuero</b>	Cod. 902891 · [PZ270]
<b>Marrón</b>	Cod. 902905 · [PZ270]
<b>Ceniza</b>	Cod. 902919 · [PZ270]
<b>Basalto</b>	Cod. 902912 · [PZ270]



[325x330x18 mm.]

### Peldaño redondeado 25 Rounded stair-tread 25

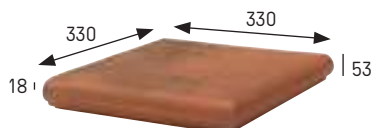
<b>Cuero</b>	Cod. 903961 · [PZ220]
<b>Marrón</b>	Cod. 903962 · [PZ220]
<b>Ceniza</b>	Cod. 903964 · [PZ220]
<b>Basalto</b>	Cod. 903963 · [PZ220]



[244x330x18 mm.]

### Esquina redondeada Rounded stair-tread corner

<b>Cuero</b>	Cod. 902892 · [PZ555]
<b>Marrón</b>	Cod. 902906 · [PZ555]
<b>Ceniza</b>	Cod. 902920 · [PZ555]
<b>Basalto</b>	Cod. 902913 · [PZ555]



[330x330x18 mm.]

### Rodapié 33 Skirting board 33

<b>Cuero</b>	Cod. 902893 · [ML150]
<b>Marrón</b>	Cod. 902907 · [ML150]
<b>Ceniza</b>	Cod. 902921 · [ML150]
<b>Basalto</b>	Cod. 902914 · [ML150]



[325x80x16 mm.]

### Rodapié 25 Skirting board 25

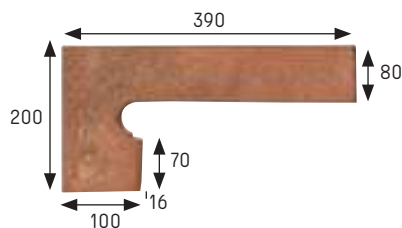
<b>Cuero</b>	Cod. 903965 · [ML150]
<b>Marrón</b>	Cod. 903966 · [ML150]
<b>Ceniza</b>	Cod. 903968 · [ML150]
<b>Basalto</b>	Cod. 903967 · [ML150]



[244x80x14 mm.]

### Zanquín izda. String left side

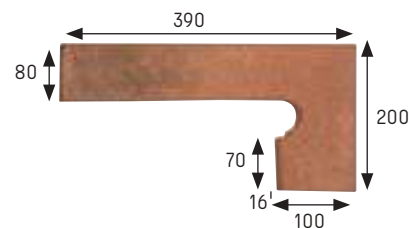
<b>Cuero</b>	Cod. 902894 · [PZ150]
<b>Marrón</b>	Cod. 902908 · [PZ150]
<b>Ceniza</b>	Cod. 902922 · [PZ150]
<b>Basalto</b>	Cod. 902915 · [PZ150]



[390x80/200x100 x16 mm.]

### Zanquín dcha. String right side

<b>Cuero</b>	Cod. 902895 · [PZ150]
<b>Marrón</b>	Cod. 902909 · [PZ150]
<b>Ceniza</b>	Cod. 902923 · [PZ150]
<b>Basalto</b>	Cod. 902916 · [PZ150]



[390x80/200x100 x16 mm.]



Basalto 33x33

	Esesor (mm) Thickness (mm)	U.M.*	U.M./caja U.M./box	U.M./Palet U.M./Pallet	Pzs./U.M. Pcs./U.M.	Pzs./caja Pcs/box	Kg./U.M. Kg./U.M.	Kg./caja Kg./box	Kg./Palet Kg./Pallet
<b>Peldaño redondeado 33</b> Rounded stair-tread 33	18	Pz. Pc.	6	216	1	6	4,4	26,4	950
<b>Peldaño redondeado 25</b> Rounded stair-tread 25	18	Pz. Pc.	6	324	1	6	3,3	19,8	1069
<b>Esquina redondeada</b> Rounded stair-tread corner	18	Pz. Pc.	2	60	1	2	6	12	360
<b>Rodapié 33</b> Skirting board 33	16	ml lm	8	576	3	24	2,3	18,4	1325
<b>Rodapié 25</b> Skirting board 25	14	ml lm	11,25	450	4	45	2,5	27,7	1108
<b>Zanquín izda.</b> String left	16	Pz. Pc.	10	300	1	10	1,3	13	390
<b>Zanquín dcha.</b> String right	16	Pz. Pc.	10	300	1	10	1,3	13	390

\*Unidad de Medida. Los artículos medidos en M<sup>2</sup> o ML se sirven contando la junta normal entre piezas  
 \*Unit of measure. Items measured in SQM or LM are delivered assuming average joint between pieces