

# Concrete / Solid

glazed porcelain stoneware + std body  
gres porcelánico esmaltado + pasta std / grès cérame émaillé + pâte std



120x120 cm/48"x48" + 90x90 cm/36"x36" + 60x120 cm /24"x48" + 60x60 cm/24"x24" + 30x60 cm/11.8"x24"



Concrete Light | Solid Light



Concrete Grey | Solid Grey



Concrete Cream | Solid Cream



Concrete Dark | Solid Dark

**Gradone Strair**  
**Peldaño Gradone**  
**Nez de marche avec retombée**

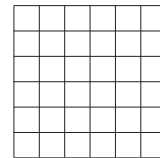
30x60 cm/11.8"x24" P749	2
30x90 cm/11.8"x36" P1014	2
30x120 cm/11.8"x48" P1513	2

**Strair Tread**  
**Peldaño Romo**  
**Nez de marche à bord arrondi**

30x60 cm/11.8"x24" P197	6
30x90 cm/11.8"x36" P326	3
30x120 cm/11.8"x48" P331	4

**Skirting**  
**Rodapie / Plinthe**

9x60 cm/3.5"x24" P097	18
9x90 cm/3.5"x36" P197	11
9x120 cm/3.5"x48" P270	10



11

**Mosaic**  
30x30 cm / 11.8"x11.8"  
5x5 cm / 2"x2"

Available Formats: / Formatos Disponibles: / Formats disponibles :

PIECES NAME NOMBRE DE LA PIEZA NOM DE LA PIÈCE	SIZES FORMATOS FORMATS (cm)	WORK SIZE DIMENSION DE FABRICACION DIMENSION DE FABRICATION (mm)	BOX / CAJA / BOÎTES			PALLET / PALET / PALETTE			
			PIECES PIEZAS PIÈCES	sqm m <sup>2</sup>	MAX. AVERAGE WEIGHT PESO MEDIO MÁXIMO POIDS MOYEN MAXIMUM (Kg)	BOXES CAJAS BOÎTES	sqm m <sup>2</sup>	MAX. AVERAGE WEIGHT PESO MEDIO MÁXIMO POIDS MOYEN MAXIMUM (Kg)	SIZE PALLET FORMATO DEL PALET FORMAT DE LA PALETTE (mm)
Concrete	120x120 SL RC	1200 x 1200 x 9	1	1,440	30,130	40	57,600	1216	1260x1260x671
Concrete	90x90 SL RC	900 x 900 x 9	2	1,620	32,500	30	48,600	1070	950x1060x810
Solid	90x90 SL RC	900 x 900 x 9	2	1,620	32,500	30	48,600	1070	950x1060x810
Concrete	60x120 SL RC	600 x 1200 x 9	2	1,440	28,000	36	51,840	1058	840x1200x740
Concrete	60x60 SL RC	600 x 600 x 9	4	1,440	27,000	32	46,080	950	800x1200x740
Solid	60x60 SL RC	600 x 600 x 9	4	1,440	27,000	32	46,080	950	800x1200x740
Concrete	30x60 SL RC	298 x 600 x 9	8	1,440	27,000	40	57,600	1150	800x1200x740

Concrete Grey  
60x120 cm / 24"x48" RC



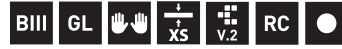
concrete  
cemento / ciment



# Concrete

white body  
azulejo / pâte blanche

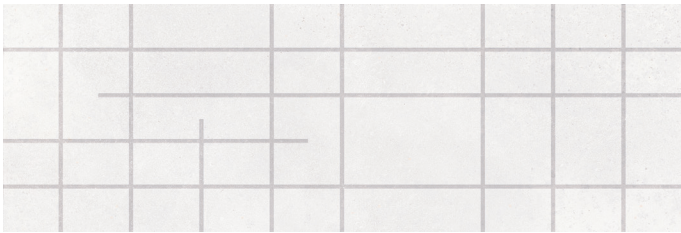
30x90 cm / 11.8"x36"



Concrete Light



Concrete Cream



Concrete Rail Light



Concrete Rail Cream



Concrete Moon Light



Concrete Moon Cream

## Available Formats: / Formatos Disponibles: / Formats disponibles :

PIECES NAME NOMBRE DE LA PIEZA NOM DE LA PIÈCE	SIZES FORMATOS FORMATS (cm)	WORK SIZE DIMENSIÓN DE FABRICACIÓN DIMENSION DE FABRICATION (mm)	BOX / CAJA / BOÎTES			PALLET / PALET / PALETTE			
			PIECES PIEZAS PIÈCES	sqm m <sup>2</sup>	MAX AVERAGE WEIGHT PESO MEDIO MÁXIMO POIDS MOYEN MAXIMUM (Kg)	BOXES CAJAS BOÎTES	sqm m <sup>2</sup>	MAX AVERAGE WEIGHT PESO MEDIO MÁXIMO POIDS MOYEN MAXIMUM (Kg)	SIZE PALLET FORMATO DEL PALET FORMAT DE LA PALETTE (mm)
<b>Concrete</b>	30x90 XS RC	300 x 900 x 7	6	1,620	19,500	63	102,060	1286	920x1230x1040
<b>Concrete Rail</b>	30x90 XS RC	300 x 900 x 7	6	1,620	19,500	63	102,060	1286	920x1230x1040
<b>Concrete Moon</b>	30x90 XS RC	300 x 900 x 8,7	5	1,350	19,000	63	85,050	1276	920x1230x1040

concrete  
cemento / ciment

Concrete Cream  
30x90 cm / 11,8"x36" XS RC  
↘

Concrete Moon Cream  
30x90 cm / 11,8"x36" XS RC  
↘

Concrete Cream  
90x90 cm / 36"x36" RC  
↘



Concrete Grey



Concrete Dark



Concrete Rail Grey

GRAPHIC  
VARIATION  
16



Concrete Rail Dark

GRAPHIC  
VARIATION  
16



Concrete Moon Grey



Concrete Moon Dark



# Concrete

white body  
azulejo / pâte blanche



20x60 cm/8"x24"



Concrete Light



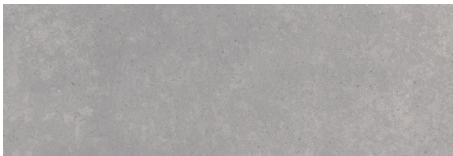
Concrete Wind Light



Concrete Grey



Concrete Wind Grey



Concrete Dark



Concrete Wind Dark



Concrete Cream



Concrete Wind Cream

## Available Formats: / Formatos Disponibles: / Formats disponibles :

PIECES NAME NOMBRE DE LA PIEZA NOM DE LA PIÈCE	SIZES FORMATOS FORMATS (cm)	WORK SIZE DIMENSIÓN DE FABRICACIÓN DIMENSION DE FABRICATION (mm)	BOX / CAJA / BOÎTES			PALLET / PALET / PALETTE			
			PIECES PIEZAS PIÈCES	sqm m <sup>2</sup>	MAX. AVERAGE WEIGHT PESO MEDIO MÁXIMO POIDS MOYEN MAXIMUM (Kg)	BOXES CAJAS BOÎTES	sqm m <sup>2</sup>	MAX. AVERAGE WEIGHT PESO MEDIO MÁXIMO POIDS MOYEN MAXIMUM (Kg)	SIZE PALLET FORMATO DEL PALET FORMAT DE LA PALETTE (mm)
<b>Concrete</b>	20x60	200 x 601 x 9	10	1,200	19,500	64	76,800	1150	800x1200x940
<b>Concrete Wind</b>	20x60	200 x 601 x 9	10	1,200	19,500	64	76,800	1150	800x1200x940

Concrete Cream  
20x60 cm / 8"x24"



Concrete Wind Cream  
20x60 cm / 8"x24"



Concrete Cream  
60x120 cm / 24"x48" RC



concrete  
cemento / ciment

